



New European Bauhaus

beautiful | sustainable | together

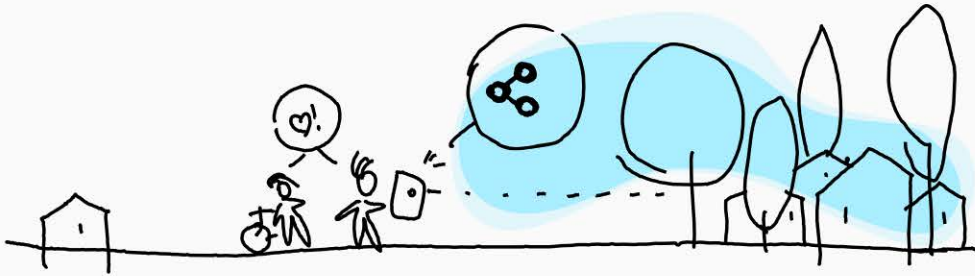
Before we start

The data you introduce in this collector is processed on a server located in Ireland by Cognitive Edge Pte. Ltd., an external contractor assisting the European Commission. Cognitive Edge Pte. Ltd., is a UK-based business bound by a specific contractual clause for any processing operations of personal data on behalf of the Commission, and by the confidentiality obligations deriving from the transposition of the General Data Protection Regulation in the EU Member States ('GDPR') You can find more details on the collection and use of personal data in the [official data protection information](#).

Your participation is completely **voluntary** and remains **anonymous** unless you decide to fill out and disclose the non-mandatory personal information collected on this site, specifically your name and the link to your social media account or website. As you share your examples, ideas or concerns, please refrain from disclosing information in your answers that would **compromise someone else's identity and do not share photos including recognisable persons**. Please acknowledge that any contribution you make will be available to the administrators of this system as specified in the [data protection information page](#).

Acknowledgement

- I have read the data protection statements and I acknowledge that any contribution I make will be available to the administrators of this system



Around us, there are seedlings of new beautiful, sustainable, inclusive forms of living.

From spaces and structures to new or re-valorised materials, innovative or re-discovered objects, alternative ways to harvest and use energy, inclusive common practices and experiences. Many examples demonstrate today how we could live together in a better future.

Be practical: share one of those concrete examples to show that values of the New European Bauhaus are already among us. It can be your own work or something you have seen and experienced.

If you would rather share something less concrete, like an idea or an emotion, [please follow this link](#). Or, if you prefer to share a challenge or a need, [please follow this link](#).

Think about an existing space, structure, object, material, event, practice or habit that for you represents a contemporary example of beautiful, sustainable, inclusive forms of living. It can be a solution you are working on, something you worked on in the past, or something you have experienced. Can you describe its key features? Why is this inspiring to you, and why do you consider it beautiful, sustainable, inclusive? What societal and environmental changes or innovations does it introduce? What qualities does it embed?

Please describe your example (add a page if you need more space)

Would you add a link to a picture?

Please only share images for which you have copyright. If you share a picture containing people, make sure you don't reveal their identity.

Would you add a link to a web page for more information?

In five words, what values and principles inspire this example?

In five words, what societal or environmental changes does this example offer?

Where is it located?

Is this example...

- A network of people
- An event
- An environment or a place
- A building or an object
- A tool, method or process
- A program or an institution
- A material
- A behaviour, practice or habit
- An experience or service
- A piece of research or a study
- A law, standards or norm
- Other

This example improves...

- Lifestyles
- Culture
- Environment
- Physical spaces and solutions
- Digital spaces and solutions
- Relationships and social processes, including governance
- Education
- Mobility
- Economic, business and financing models
- Materials, water, air and energy
- Design and planning
- Manufacturing and production
- Renovation and recycling
- Other

What is its scale?

- Local - cross-local
- Regional - cross-regional
- National - cross-national
- EU
- Global

Who initiated this example?

- Academia
- Business
- Civil society
- Public authorities
- N/A

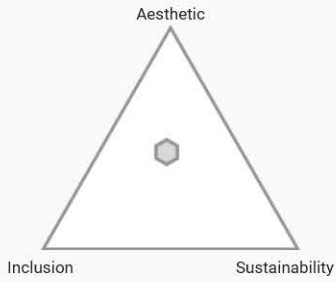
What is its lifespan?

- One time activity
- A recurring activity or event
- One year or below
- Several years
- N/A

How could the EU institutions help to scale or replicate this example?

- Institutional visibility
- Networking
- Infrastructural support (i.e. test sites, building space, equipment, etc.)
- Knowledge support
- Link to relevant policies and instruments
- N/A

Where would you position your example?



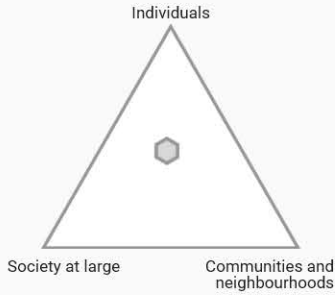
N/A

What does this example offer?



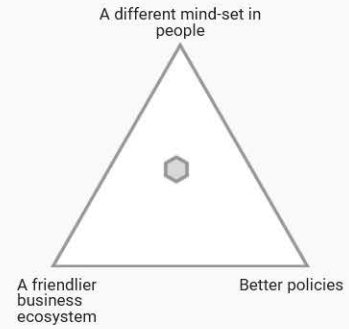
N/A

Who are its beneficiaries?



N/A

What does this example need most to be replicated?



N/A

Who is behind this example?



How soon could this example become mainstream?



How many people benefit from this example?



Your name**A social media profile****Your role**

- Citizen / neighbour
- Business owner / entrepreneur
- Artist
- Architect / engineer
- Designer
- Scientist / researcher
- Teacher / professor
- Public officer / policy maker
- Community manager / representative
- Activist
- Other

Your affiliation

- Local government
- National government
- EU institutions
- Local association
- Regional association
- Inter-regional association
- Large corporation
- Small and medium enterprise
- Micro enterprise
- N/A

Please indicate if you want to make this submission public

- yes, please feel free to share the example or its parts in social media and with the whole community
- no, please only use for research purposes

Please indicate if you want to share your name and link to social media

- yes, please share my name and social media account
- no, please only keep this information for research purposes

Copyright

By submitting your contribution to the "New European Bauhaus" project (hereinafter referred to as "the Project") coordinated by the European Commission's Joint Research Centre, you agree to the following: Any contribution you make to the Project, including but not limited to written material, data, pictures and audiovisual material, shall be available to the European Commission to use, reproduce, store, distribute, modify, publish, display, disseminate, create derivative works, translate, communicate to the public or otherwise make publicly available, in any format, medium and language, whether in electronic form or in print, on the European Union websites or third parties websites, including social media. Your contribution to the Project, at the time of submission, can be made available under the terms of the Creative Commons Attribution 4.0 International Public License (CC BY 4.0) (full text available at: <https://creativecommons.org/licenses/by/4.0/legalcode>). You warrant that any contribution you make to the Project is your own intellectual creation and it does not violate any third parties' intellectual property rights such as copyrights, trademarks, patents, trade secrets or database rights. Unless you have disclosed your name, the European Commission has no obligation to mention your name when using or disseminating your contribution to the public.

Acknowledgement

- I hereby acknowledge to have read and understood the terms of participation as indicated above, and give my full agreement and consent.